

S2 Series Wireless Kinetic Switch Product Specification

Modify Record

Serial no.	Version	Date	Modify Content
1	V1.0	2018-09-01	Initial Version

1.Product Overview

1.1 Product Introduction

S2 series kinetic switch adopts MEA (Micro energy acquisition) technology, converting kinetic energy from user's press into electrical energy efficiently. It based on ISM (Industrial Scientific Medical) frequency band. Work through Edition Ebelong1.1 (communication protocol). It allows more than one unit to be paired each other in the set, achieving the use of two-way control, multiple units control one, one control multiple units. Switch can be mounted on the wall by sticker, bottom plate fixed or bracket fixed.

1.2 Product Image



2.Technical Parameters

Switch type	Push button
Working Type	Push button
Power Supply	Self-powered
Modulation System	FSK
Radio frequency	RF 433MHz
Keys Quantity	1key/2key/3key
Operate Range	up to 80m outdoors up to 25m indoors (May vary depending on conditions)
Life Time	≥ 100,000 times
Color	white/silver/golden
Dimension	L86mm*W86*H17mm
Working Temperature	-20 ~ +55°C
Casing Material	PC
Certifications and Standards	Europe EN 60669-1:2018 EN 60669-2-1:2004+A1:2009+A12:2010 EN 55035:2017

3. Product Features

3.1 Pair With Controller

a. Ordinary Pairing

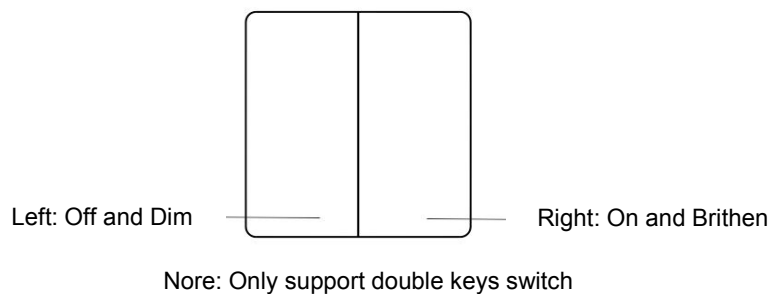
S2 series kinetic switch function with wireless receiving controller, the pairing method is: long press on "pairing" button of receiver for three seconds, when indicator flashes slowly, press any buttons of kinetic switch once, indicator goes off that means pair succeeds. Now kinetic switch can be used to control receiver (for the function of receiver, please refer to the manual related to the wireless receiving controller)

If the controller is dimmable, when dimming mode is turned on, long press the switch to adjust the brightness in cycle, short press the button to control the light on and off.

b. Directional Pairing (S2 dual keys switch)

To enable products working compatible with users' traditional habits, the Directed pairing helps to make sure one switch controls on/off for more than one receiving controller at the same time. The pairing method is: long press "pairing" button of receiver for three seconds, loose your finger from the button when its indicator flashes, press any key of kinetic switch for 4 times within 1 second, indicator goes off that means pairing succeeds. Now Pairing completes.

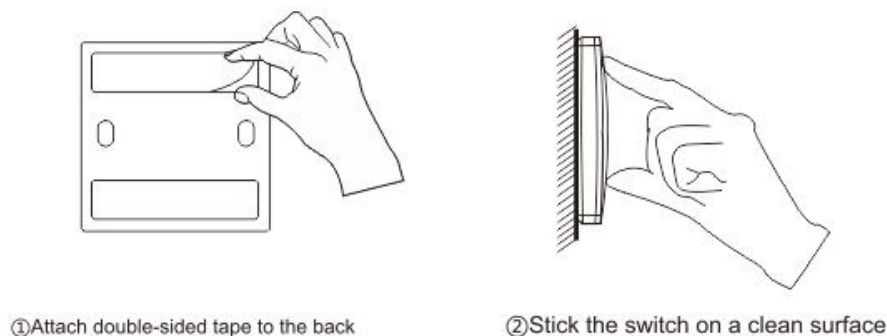
After pairing is finished, it functions as follows: short press left key to turn off, right key to turn on. For dimming function, long press left key to turn up, long press right key to turn down.



4. Installation Instructions

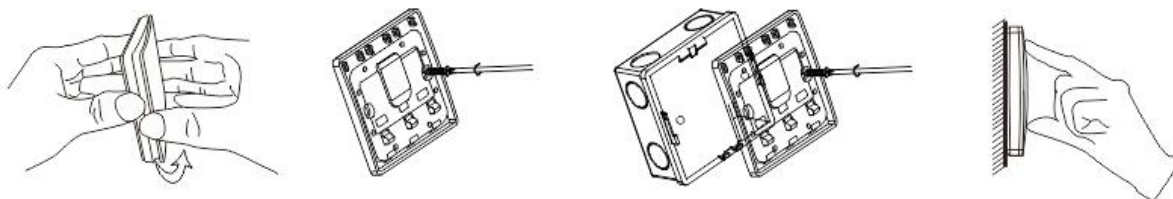
Method 1:

S2 switch can be mounted on glass surface, marble surface, ceramic tile surface and other clean surface, with 3M adhesive tape included.



Method 2:

Use screws to fix switch on the wall or 86 wire box.



① Carefully open the switch panel

② Fix into expansion screw in the wall or 86 type switch box

③ Press the key back to the base

5. Production Dimension

