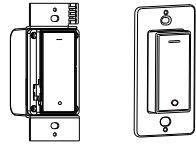


## INSTRUCTION MANUAL

ERC111 Dimmable Controller  
EU1254 Kinetic Switch

## Introduction

ERC111 smart dimming controller can be controlled with EU1254 wireless kinetic switch, no battery is needed during use. It has WIFI module inside, so can be controlled remotely with mobile APP, and also can use voice control with Amazon Alexa.



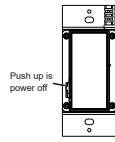
ERC111 Dimming Controller EU1254 Kinetic Switch

## Product parameters

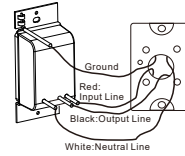
Controller Model: ERC111  
Kinetic Switch: EU1254  
Rated Voltage: 120VAC or 200V LED or CFL  
Rated Power: 300W INC or 200W LED or CFL  
Wireless Communication: WIFI 2.4GHz & RF 902 MHz  
Control distance: 50m (Outdoor) 30m (Indoor)  
Sensitivity: -110dBm  
Storage Capacity: Maximum 10 switch keys can be paired  
Dimming controller dimensions: L44\*W41\*H107mm  
Kinetic switch dimensions: L33\*W16\*H65mm  
Switch base plate dimensions: L56\*W4\*H107mm

## Installation

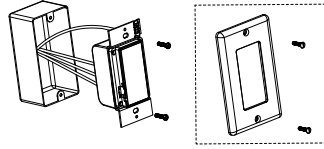
### Controller



1. Push up to power off before wiring



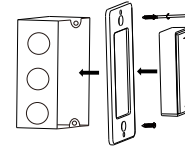
2. Use the line cap to wire as shown



3. Load the controller into the wire box and use wall plate to cover.

\* Wall plate need to be purchased separately

### EU1254 Kinetic Switch



1. Mount the base plate on the wire box or wall

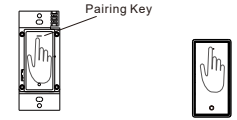
2. Adhere the wireless kinetic switch to the base plate

## Pairing Method

At the factory, the controller and switch have been paired one-to-one default. In some cases, you need to re-pair the controller and kinetic energy switch. Methods as below.

1. Power on the dimming controller, and then keep pressing the pairing key about 6 seconds, when the indicator light flash slowly (flash 1 time per second), then release the key, and the controller is ready for pairing. You can also click the "pairing" button in the app to make device enter pairing mode.
2. At this time, press any button of the kinetic energy switch once (do not press several times). If the indicator light is off, it means that pairing is successful.
3. If need to pair with multiple switches, repeat the above procedure. Please note one controller can be paired with maximum 10 switches.
4. After pairing, you can press the kinetic energy switch to control dimming controller. If controller is not connected with loads, you can know controller status by the indicator light status (on/off).

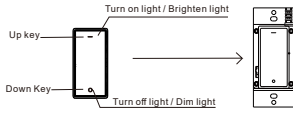
### Pairing Method



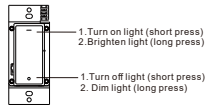
1. Long press pairing key 6 seconds, indicator light will flash slowly
2. click any key of kinetic switch once

## Control Method

After pairing, one kinetic switch can control one dimming controller, short press Up key to turn on light, short press Down key to turn off light; long press Up key to brighten light, long press Down key to dim light:



Expect kinetic switch control, Dimming controller also has its own keys to control light, control method as below picture:

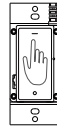


1. Turn on light (short press)
2. Brighten light (long press)
1. Turn off light (short press)
2. Dim light (long press)

## Clear Pairing

1. If you need to clear pairing of switch and controller. You should keep press the pairing key 12 seconds until the light changes from blinking to steady light and then goes out. Or click on the "Clear Pairing" button in the app.

2. After clearing the pairing, the kinetic switch will no longer control the controller, but can be paired again.



## APP download

This controller can use mobile APP for remote control. Search "Kinetic switch" in App Store or Google Play and download, or scan below QR code to download.



## Connect WIFI Method

1. Use mobile phone to download the app and follow the prompts to register your account in the app.

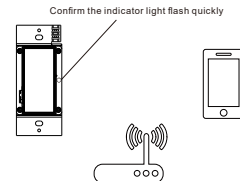
2. Power on the controller, and confirm the indicator light flashes quickly (twice per second). If the indicator light is not flashing quickly, press and hold pairing key about 10 seconds, the indicator light will flash from slowly to stay on, release pairing key when the indicator light stay on. After 3 seconds, the indicator light will flash quickly (twice per second), which means that controller is ready for WIFI connection.

3. Click the "+" button in top right corner of APP, and then select "Single dimming controller".

4. Then click "confirm indicator light rapidly blink" and enter password of WIFI, it starts to connect. If the indicator light goes off, which means APP connect successfully and you can find the device in the home page of APP.

5. After the pairing with network, so can use APP to turn on/off light or adjust brightness. Also you can use mobile app for remote control, timed control and scene control.

6. If you need to replace the router, you need to delete all the devices in the app, and then re-add each device to your account once in the new router.



Pairing the three devices as close as possible

## ECHO

1. In the Kinetic Switch APP, rename the controller devices, such as bedroom lights.
2. Add the SmartLife skill in Alexa APP, and log in by using the account and password of the Kinetic Switch APP.
3. Discover the device in the smart application selection in the Alexa APP.
4. Now you can control and controller with voice.



\*Alexa, turn on/off bedroom light\*

\*Alexa, bright bedroom light\*

## Instruction of Dimming Function

1. ERC111 controller uses MOS components. Support incandescent lamp, tungsten lamp and mostly LED lamp which supports TRIAC or MOS dimming. If flickering occurs during dimming, replace the compatible lamp. Segmented dimmers and lamps with dimmers are not supported.

2. This controller only can be paired with EU1253 kinetic switch. After pairing, long press Up key of kinetic switch to brighten light, and it will stop to brighten when brightness reach maximum brightness. Long press Down key of kinetic switch to dim light, and it will stop to dim when brightness reach minimum brightness.

## Troubleshooting

### 1. WIFI connection failed

Troubleshooting method: Please confirm the indicator light is blink rapidly (twice per second); If not blink rapidly, please set the indicator light to blink rapidly according to connect WIFI method. Let router, controller and mobile phone as close as possible (within 5 meters)

### 2. The controller is off line in APP

Troubleshooting method: Maybe the number of the router connection over the maximum. Usually, only 15 devices can be connected with Common router, please upgrade router and close devices not needed.

### 3. Controller can not work after power on

Troubleshooting method: If the loads exceed the rated current or short circuit, the fuse may blow. Please check the loads if suitable.

### 4. When the load is LED lamp, the lamp will flash during dimming

Troubleshooting method: Please check the parameters of LED lamp, and confirm that it can support TRIAC dimming or MOS dimming. If it does not support, please replace the suitable lamp.