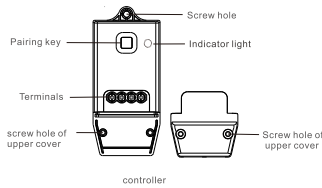


INSTRUCTIONS

DIMMING RECEIVING CONTROLLER

Introduction

Dimming receiver controller can pair with kinetic switch to control light on/off/dimming. The has WiFi module, so can use mobile APP to remote control, and Amazon Alexa voice control.

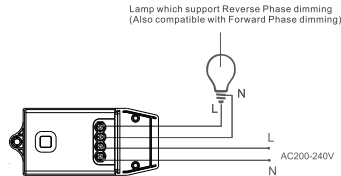


Product Parameters

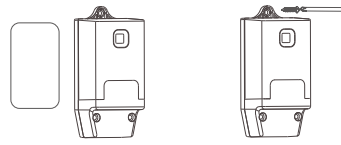
Product Name: Single dimming controller
 Working Temperature: -20 ~ +55°C
 Control Distance: 50m(outdoor), 30m(indoor)
 Sensitivity: -110dBm
 Voltage Range: 200~240V 50/60Hz
 Rated Power: LED 100W
 Dimensions: L98*W44*H31mm
 Wireless Communication: WIFI 2.4G & RF 433Mhz
 Storage Capacity: Maximum 10 switch keys can be paired

Note: The effective distance is measured by EBELONG laboratory. In the actual use, it will vary due to environment changes.

Connection and Installation



Connection method

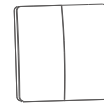


Installation method 1:
Paste with double-sided adhesive tape on clean surface

Installation method 2:
Fix into expansion screw in the wall

Instruction of Dimming Function

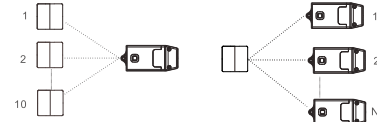
1. Controller contains MOSFET component. Support Reverse Phase dimming and Forward Phase dimming. So can use lamps such as incandescent lamp, tungsten lamp and mostly LED lamp. If flickering occurs during dimming, replace the compatible lamp. Segmented dimmers and lamps with dimmers are not supported.
2. This controller only can pair with push button switch: after pairing is successful, long press the push button switch can adjust lamp brightness circularly. Release the switch when brightness reach your desired percentage. Also can use mobile APP or Alexa voice control lamp brightness.
3. This controller has a brightness memory function. When turn on the lamp again, it maintains the last brightness of lamp.
4. If you press switch key for long time, the controller dims from the darkest to brightest for 2 cycles, and will stop dimming when reaching maximum brightness after 2 cycles.
5. Long press to adjust the lamp brightness, if the interval time between 2 times of long press is less than 1 second, the dimming direction (dim or brighten) will be reversed.



1. Long press dimming, if this time is brighten direction, release and long press again within 1 second, it will change to dim direction.
2. Long press dimming, if this time is dim direction, release and long press again within 1 second, it will change to brighten direction.

Combination Method

This controller can pair with kinetic energy switch freely, can form two modes: one control multi, and multi control one.



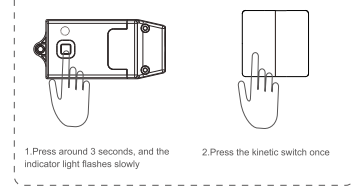
Multi control one (Maximum 10 switch keys control one controller)

One control multi (One switch key can control multiple controllers, no limits)

Ordinary Pairing Method

1. Connect the controller's input to the power supply, press the controller "pairing key" around 3 seconds, release when indicator light flash slowly (flash 1 time per second).
2. Press the selected kinetic energy switch once (Do not press several times continuously), then indicator light is off, means the pairing is successful.
3. If need to pair with multiple switches, repeat the above procedure. Please note one controller can be paired with maximum 10 switches.
4. After the pairing is successful, so can press the kinetic switch to control controller. In the case of no connected loads, you can know controller status by the on/off of indicator light.

Ordinary pairing method

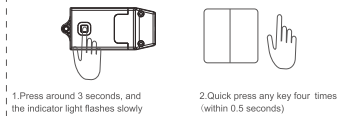


Directional Pairing (not common use)

In order to meet the user's usage habit of switch and to ensure the synchronization of one control multi mode, so we define the directional pairing mode. Directional pairing only support 2 keys or 6 keys push button switch.

1. Connect the controller's input to the power supply, press the controller "pairing key" for around 3 seconds, release when indicator light flash slowly (flash 1 time per second).
2. Press push button switch left or right key four times (within 0.5 second), then the indicator light goes off, which means the pairing is successful.
3. After pairing is successful, left and right key of push button switch as a group, press the left key is OFF and the right key is ON, long press the left key is dimming and right key is brighten.

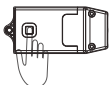
Directional pairing of push button (only supports 2 keys or 6 keys)



3. After pairing is successful, short press left key is off, and short press right key is On; long press left key is dimming, and long press right key is brighten.

Clear pairing

1. If you need to clear pairing of switch and controller, long press the controller "pairing key" for around 12 seconds, the indicator light will flash from slowly - quickly - stay still - off. After indicator light is off, which means that all paired switch information is cleared. If you need use this controller again, please pair again.



Press for around 12 seconds, the indicator light will from flash slowly - flash quickly - stay still - off.

APP download

This controller can use mobile APP to remote control. Search "Kinetic switch" in App store or Google Play and download, or scan below QR code download.



Connect WIFI method

1. Use your mobile phone to download APP and follow the prompts to register your account in the APP.
2. Power on the controller, and confirm the indicator light is flash quickly (twice per second). If the indicator light is not flash quickly, keep pressing the "pairing key" around 10 seconds, the indicator light will flash from slow - fast - stay still, release when the indicator light is stay still. Then wait for 3 seconds, the indicator light will flash quickly (twice per second).
3. Click "Add device" in the APP, and select model "Single dimming controller".

4. Then click "confirm indicator light rapidly blink" and enter password of WIFI, it starts to connect. If the indicator light goes off, which means APP connect successfully.
5. After the pairing with network is successful, so can use mobile APP to remote control, timed control and scene control.
6. If change WIFI router or change WIFI password, please repeat setting from second step.

Confirm the indicator light flashes quickly



Pairing the three devices as close as possible

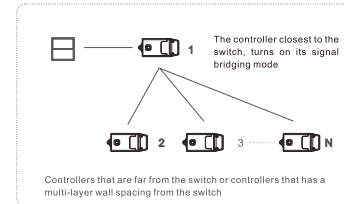
ECHO

1. In the Kinetic Switch APP, rename the controller devices, such as bedroom lights
2. Add the skill SmartLife in Alexa APP, and log in by using the account and password of the Kinetic Switch APP
3. Discover the device in the smart application selection in the Alexa app
4. Now you can voice control the controller

Bridging mode

Under the one-to-multi mode control, when the distance is long or there is multiple walls between the switch and the controller, the signal will be weakened, and the control is not effective.

1. As the diagram, pair all controllers first with the switch. Then turn on the bridging mode of the controller closest to the switch (controller 1).
2. Long press the controller 1 "pairing key" for 7 seconds, and let go when the indicator light is quickly flashing. Wait for a few seconds after the lights flash once every two seconds, means that the controller bridging mode is open.
3. When turn on the bridging mode, the controller will enhance the switch signal to Controller 2 - Controller N to prevent the loss of signal.



Controllers that are far from the switch or controllers that has a multi-layer wall spacing from the switch

Troubleshooting

1. WIFI failed internet pairing
 Troubleshooting method: Please confirm the indicator light is blink rapidly (twice per second); if not blink rapidly, please set the indicator light to blink rapidly according to connect WIFI method.
 Let router, controller and mobile phone as close as possible (within 5 meters).
2. The controller is off line in APP
 Troubleshooting method: It may be the router connections quantity reaches the upper limit. Common router can connect maximum 15 pcs devices, please upgrade router and close devices which are not needed.
3. Controller cannot work after it is powered on
 Troubleshooting method: If the loads exceed the rated current or short circuit, the fuse may blow. Please first exclude the short circuit, and confirm whether the load power is beyond the maximum support range.
4. When the load is LED lamp, the lamp will flash during dimming
 Troubleshooting method: Please check the parameters of the LED lamp to confirm that it can support Reverse Phase dimming or Forward Phase dimming. If it does not support, please replace lamp supports dimming function mentioned.

Certificate / Inspected