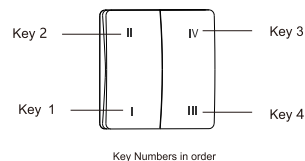


User manual

Zigbee Green power Switch

Introduction

The wireless switch generates electricity with kinetic energy technology, no battery and no wire are required. Its supports standard Zigbee 3.0 Green Power. With the bridge of TUYA ZigBee gateway, the switch will work with all intelligent devices from TUYA Platform, such as lamps and lanterns, curtain motor, etc.



Parameters

Model: ES3454-Z
 Number of keys: 4
 Communication protocol: Zigbee 3.0
 Control distance: 20m (Indoor)
 Method of use: Work under TUYA ZigBee gateway
 Product size: L86*W86*H17mm

Type: Push button
 Power supply: Self-power
 Working Frequency : 2.4GHz
 Operating Temperature: -20°C ~ + 50°C
 Channel: 11 - 26

Note: the wireless distance was measured in the laboratory. It has slight change by environmental factor during actual use.

Method of pairing

The wireless switch will be linked to TUYA gateway through Smart app (Both wired & wireless gateways are available). When above operation is completed, user can set different scene controls as requested from the app

Please follow below steps for the Network configuration:

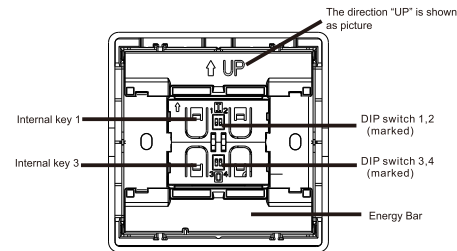
Step 1:

Add ZigBee gateway to APP, then enter "Device Information" Interface, Find out the channel which Gateway is in (channel range: 11-26)

Step 2:

Follow the channel of gateway, make the switch in same channel. (Please take the keys off from switch, adjust the DIP button with the tool provided). For more operation of DIP switch, please see below:

(1) Dip switch and internal keys (no panel) :



(2) Datasheet for Channel and DIP switch (↑ push up, ↓ pull down)

	DIP switch 1	DIP switch 2	DIP switch 3	DIP switch 4
Channel 11	↑	↑	↑	↑
Channel 12	↑	↑	↑	↓
Channel 13	↑	↑	↓	↑
Channel 14	↑	↑	↓	↓
Channel 15	↑	↓	↑	↑
Channel 16	↑	↓	↑	↓
Channel 17	↑	↓	↓	↑
Channel 18	↑	↓	↓	↓
Channel 19	↓	↑	↑	↑
Channel 20	↓	↑	↑	↓
Channel 21	↓	↑	↓	↑
Channel 22	↓	↑	↓	↓
Channel 23	↓	↓	↑	↑
Channel 24	↓	↓	↓	↓
Channel 25	↓	↓	↓	↑
Channel 26	↓	↓	↓	↓

Note: The default channel is 26

Step 3:

Click the Sub-Device from gateway page, press internal key 1 and key 3 at the same time, trigger the "energy bar" to get wireless switch paired

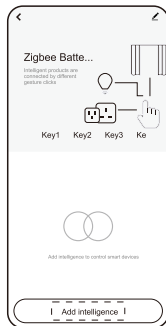
Feature setting

After Zigbee switch is linked to the gateway, set wireless switch to work under different kinds of scenes. (4 gang are supported). For example: press key 1 to open the indoor light and curtain at the same time.

The setup steps are below:

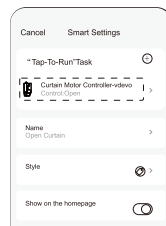
Step 1:

Enter the switch interface, select the keys required (App supports 4 buttons), and then click "Add in intelligence".



Step 2:

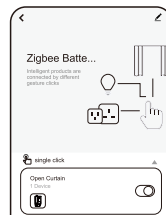
Enter the page of "Create Intelligence", set the function which should be performed, like open the curtain. Then Click "save"



Step 3:

Select the scene that was set from Choose Smart (for example: open the curtain), and then click "save".

Now the wireless switch functions to control curtain defined.



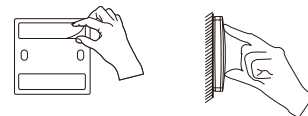
Note: follow the above operation, the wireless switch can control all the devices (wifi/zigbee lightings, wifi/zigbee curtain motor) from TUYA platform.

Erase the pairing

Enter the interface of wireless switch, click the button in top right corner, choose "remove the device", to remove the switch.

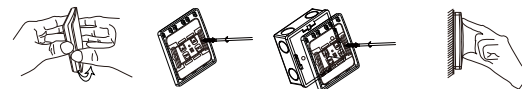
Installation

Method 1: Stick the wireless switch to the clean places (Glass, marble, tile surface) with adhesive tape attached, which helps to fix.



① Place the two-faced adhesive tape on the back
 ② Stick the switch onto the clean surface

Method 2. Take the keys off from the switch, fix the back cover of the switch to the 86 box or the expansion rubber by screw driver, put the keys back to the switch.



① Take The keys off
 ② fix the back cover of the switch to the 86 box or the expansion rubber
 ③ put the keys back to the switch.

CERTIFICATE
 INSPECTED